

# LUMINAIRES - RECESSED GROUND LIGHTING

POENRGL2

## Product Description:

It is the new Enlite range of 304 stainless steel ground lights. Designed to be discreetly recessed these ground lights can be used for a number of applications such as lighting up pathways and patios making them perfect for domestic and commercial applications. They can project light up to 4 ways creating up to 360° light distribution using the 4 interchangeable bezels (sold separately).

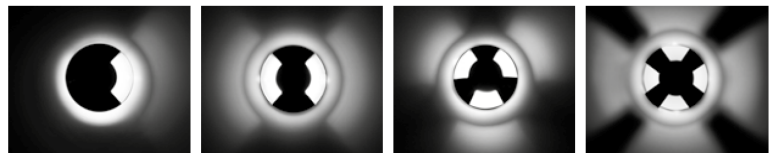
## Product Image:



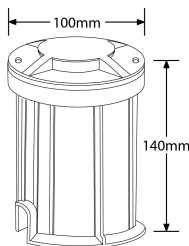
## Product Features:

- IP67 Mains voltage 304 stainless steel LED ground light
- Supplied with plastic mounting sleeve
- can project light up to 4 ways creating up to 360° light distribution using the 4 interchangeable bezels (sold separately)
- Pre-wired with 1 metre of rubber cable
- For use with GU10 lamps – lamps not included (Max 35W lamp)
- Cut-out 94mm without mounting sleeve. Cut-out 98mm with mounting sleeve
- 3 year warranty

240V GU10 Recessed Ground Light mounting sleeve & body



## Line Drawing Image



## Product Specs:

Lamp Base	GU10	Luminaire Distribution	Direct
Input Voltage	100~240V AC	IP Rating	IP67
Positional Adjustment	Fixed	Optic Material	Glass
Length (mm)	140	Width (mm)	100
Height (mm)	140	Cutout Diameter (mm)	94
Overall Diameter (mm)	110	Recess Depth (mm)	160

## SKU Table and Ordering

SKU Code	POENRGL2
----------	----------





## Compliance & Approvals:

---



✓ RoHs

### Accessories:

SKU Image	SKU Code	Description
	POENRGLC1	Stainless Steel Recessed Ground Light Bezel 1 way
	POENRGLC2	Stainless Steel Recessed Ground Light Bezel 2 way
	POENRGLC3	Stainless Steel Recessed Ground Light Bezel 3 way
	POENRGLC4	Stainless Steel Recessed Ground Light Bezel 4 way

## Warranty

---

This product has a warranty period of 2 Years.

Warranties are valid from the date of purchase. The warranty is invalid in the case of improper use, installation, tampering, removal of the Q.C. date label or installation in an improper working environment or installation. Should this product fail during the warranty period it will be replaced free of charge, subject to the correct installation of the original product and subsequent return of the faulty unit.